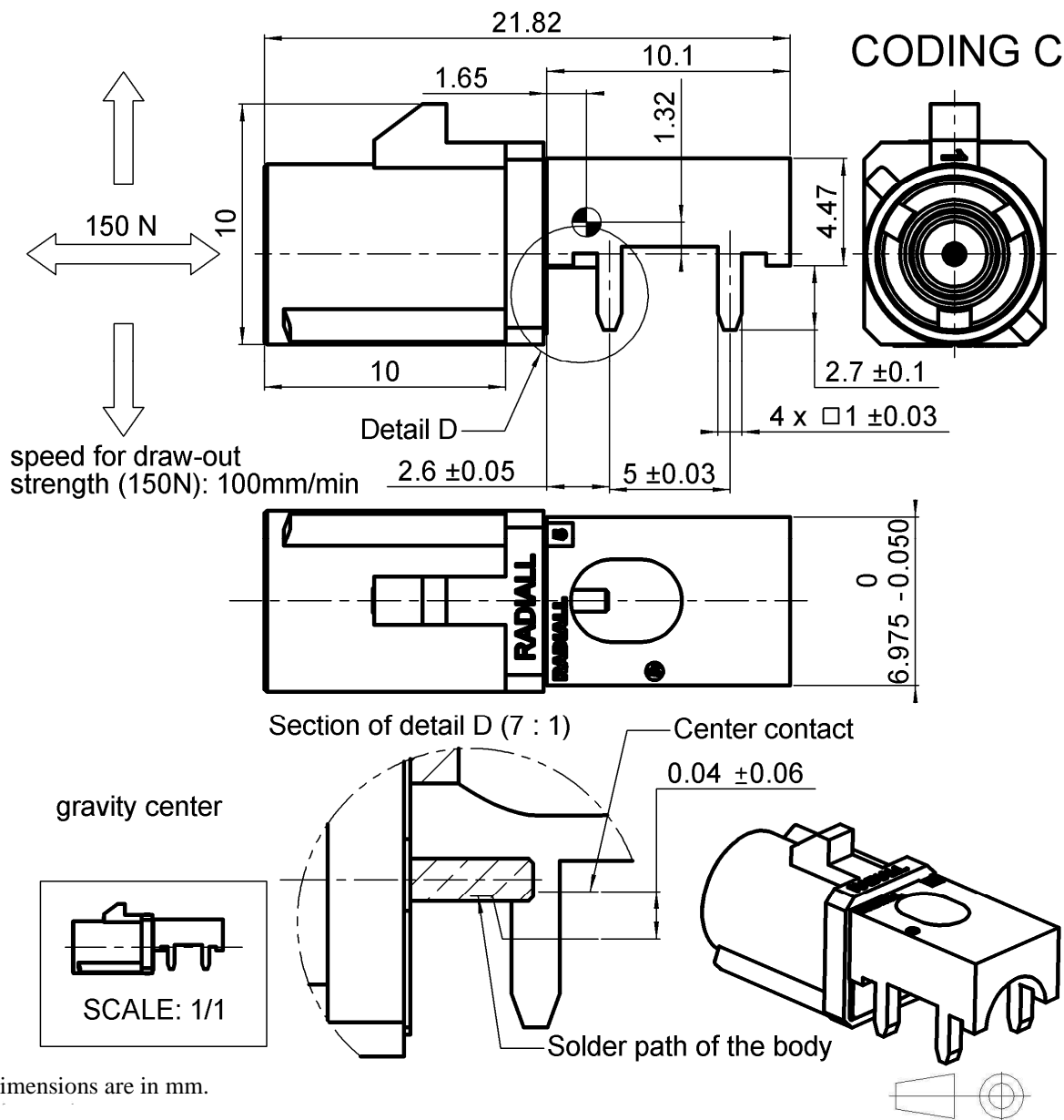


STRAIGHT PCB RECEPTACLE

EDGE CARD - PIN IN PASTE VERSION

R197.160.C18

Series : SMB
CARLOCK



All dimensions are in mm.

COMPONENTS	MATERIALS	PLATING (μm)	
BODY	ZINC ALLOY	TIN FOR HI TEMPERATURE	
CENTER CONTACT	BRASS	GOLD 0.5 OVER NICKEL 2	
OUTER CONTACT	-	-	
INSULATOR	PTFE	-	
GASKET	-	-	
OTHERS PARTS	-	-	
-	-	-	
HOUSING	PA 4.6 30%GF	UL CLASSIFICATION	COLOR
		UL 94 V2	BLUE RAL 5005
		* According to FAKRA specification	

Issue : 0943 C

In the effort to improve our products, we reserve the right to make changes judged to be necessary.



STRAIGHT PCB RECEPTACLE
EDGE CARD - PIN IN PASTE VERSION

R197.160.C18

Series : **SMB**
CARLOCK

PACKAGING

Standard	Unit	Other
350	‘W’ option	Contact us

SPECIFICATION

QS9000
SN 55228-2**

ELECTRICAL CHARACTERISTICS

Impedance	50	Ω
Frequency	0-4	GHz
VSWR	1.06* + 0,0130	x F(GHz) Maxi
Insertion loss	0.03*	$\sqrt{F(GHz)}$ dB Maxi
RF leakage	- (- F(GHz)) dB Maxi
Voltage rating	335	Veff Maxi
Dielectric withstanding voltage	1000	Veff mini
Insulation resistance	1000	M Ω mini

ENVIRONMENTAL

Operating temperature	-40/+110	$^{\circ}$ C
Hermetic seal	NA	Atm.cm3/s
Panel leakage	NA	

OTHER CHARACTERISTICS

Assembly instruction

Others :

*COAX TRANSMISSION LINE ONLY

**Complaint except that 2D label does not include the shipping note number.

MECHANICAL CHARACTERISTICS

Center contact retention	
Axial force – Mating end	10 N mini
Axial force – Opposite end	10 N mini
Torque	NA N.cm mini

Recommended torque

Mating	NA N.cm
Panel nut	NA N.cm

Mating life	50 Cycles mini
Weight	2,2300 g

Issue : 0943 C

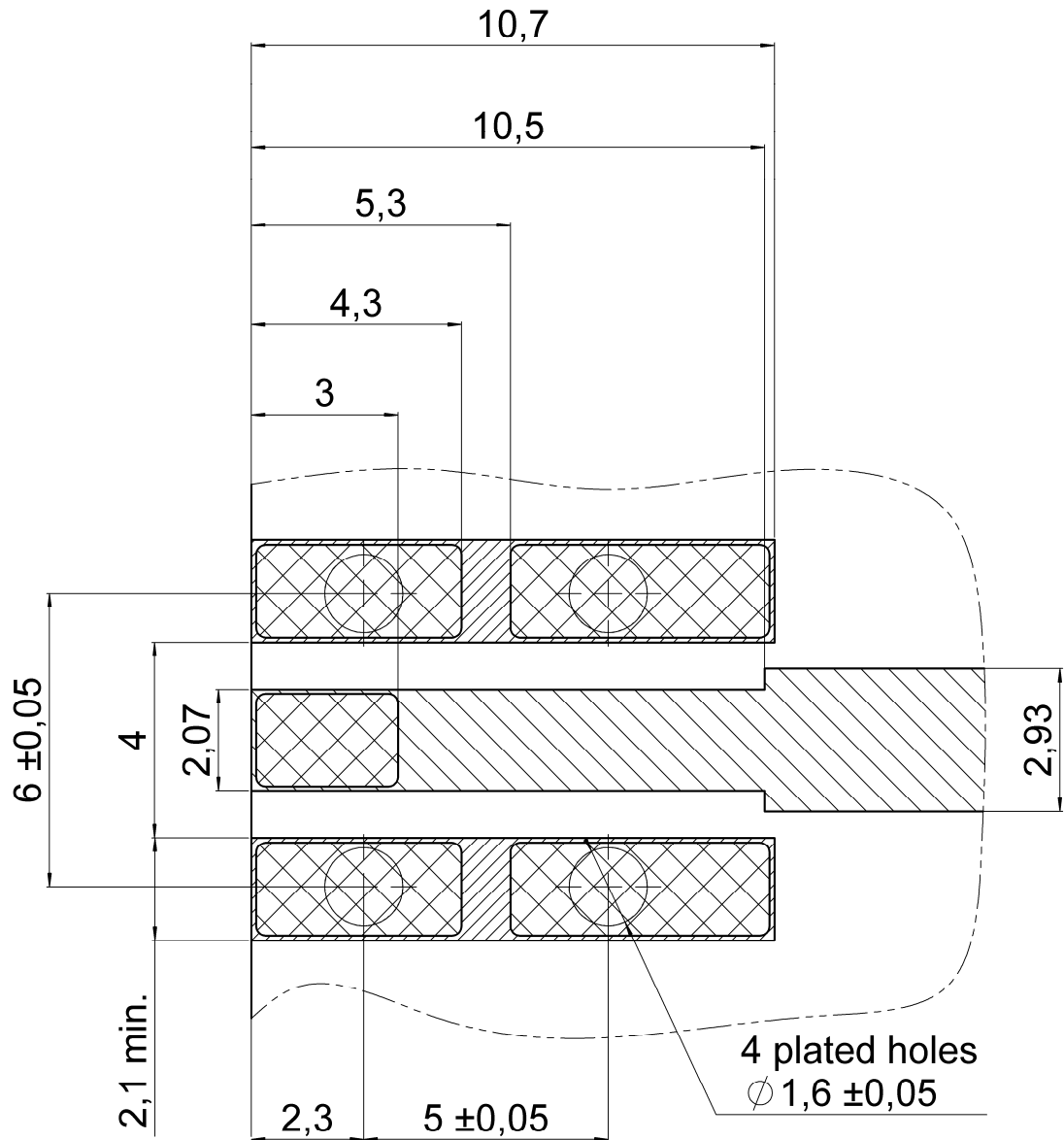
In the effort to improve our products, we reserve the right to make changes judged to be necessary.



STRAIGHT PCB RECEPTACLE
EDGE CARD - PIN IN PASTE VERSION

R197.160.C18

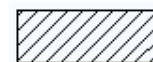
Series : SMB
 CARLOCK

MOUNTING ZONE FOR RECEPTACLE

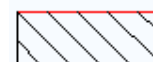
Thickness of PCB: 1,6 mm.

Material of PCB: FR4 ($\epsilon_r = 4.6$).

Solder paste has to be printed onto the land of solder and into holes to permit Pin In Hole Reflow



Ground track



Signal track



Land for solder

Issue : 0943 C

In the effort to improve our products, we reserve the right to make changes judged to be necessary.

**RADIALL®**

STRAIGHT PCB RECEPTACLE
EDGE CARD - PIN IN PASTE VERSION

R197.160.C18

Series : **SMB**
CARLOCK

SOLDER PROCEDURE

1. Deposition of solder paste 'Sn Ag4 Cu0.5' on mounting zone by screen printing application. We recommend a low residue flux.

We advise a thickness of 0.2 millimetres min. (0.008 inch min.). Verify that the edges of the zone are clean.

2. Placement of the receptacle on the mounting zone with an automatic machine of 'pick and place' type.

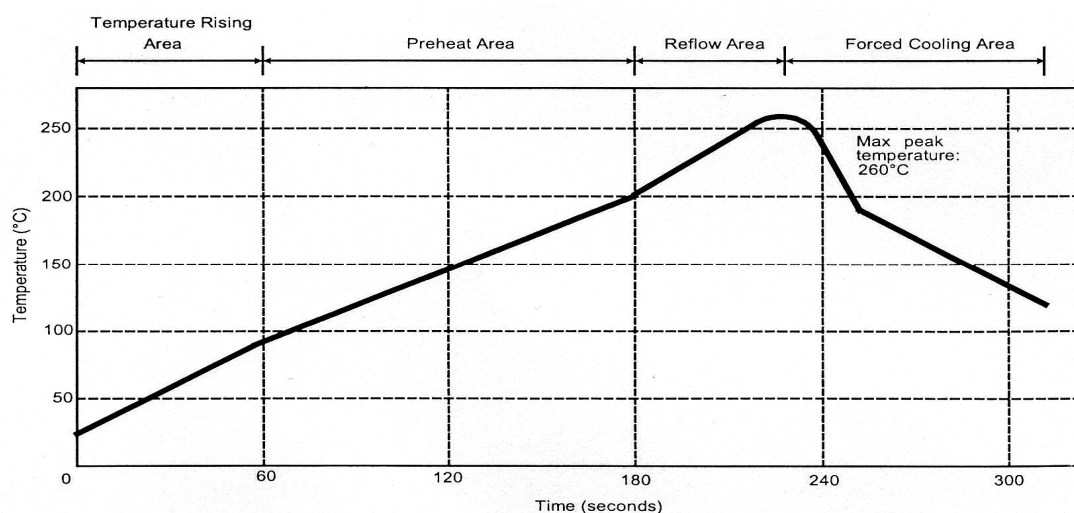
Video camera is recommended for the positioning of the component. Adhesive agents must not be used on the receptacle.

3. Soldering by infra-red reflow.

Below, please find the typical profile to use.

4. Cleaning of printed circuit boards.

5. Checking of solder joints and position of the component by visual inspection.

TEMPERATURE PROFILE

Parameter	Value	Unit
Temperature rising Area	1 - 4	°C/sec
Max Peak Temperature	260	°C
Max dwell time @260°C	10	sec
Min dwell time @235°C	20	sec
Max dwell time @235°C	60	sec
Temperature drop in cooling Area	-1 to - 4	°C/sec

Issue : 0943 C

In the effort to improve our products, we reserve the right to make changes judged to be necessary.



STRAIGHT PCB RECEPTACLE

EDGE CARD - PIN IN PASTE VERSION

R197.160.C18

Series : **SMB**
CARLOCK

REEL PACKAGING PER 350

Label for identification :

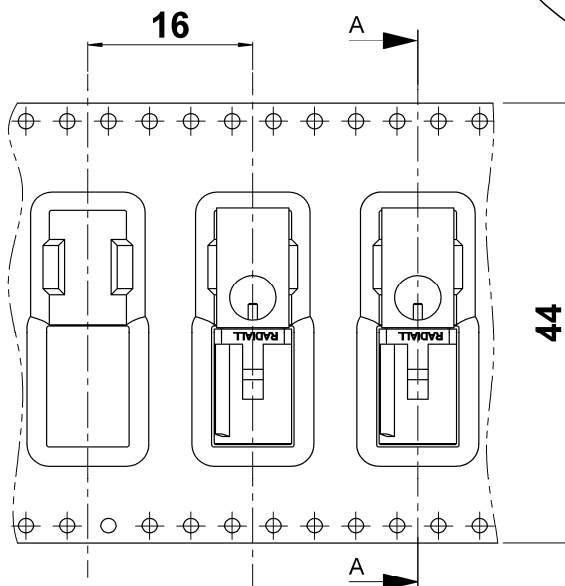
CELL MATERIAL :

Polycarbonate

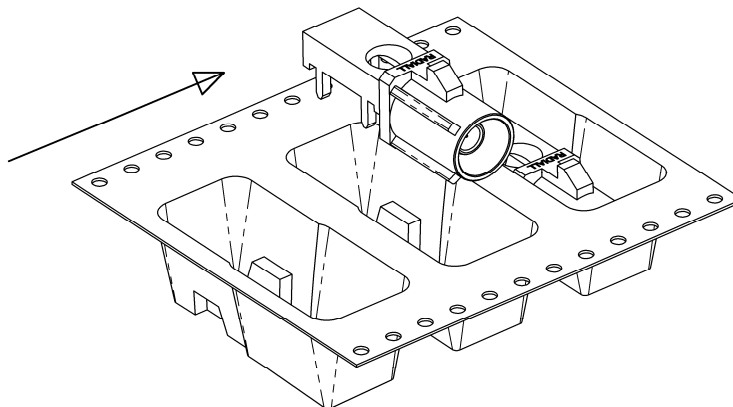
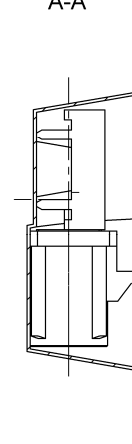
COVER TAPE MATERIAL :

conductive polyester film tape

Ø 330



A-A



Issue : 0943 C

In the effort to improve our products, we reserve the right to make changes judged to be necessary.



STRAIGHT PCB RECEPTACLE
EDGE CARD - PIN IN PASTE VERSION

R197.160.C18

Series : SMB
CARLOCK



CODING A
 COLOR BLACK
 RAL 9005



CODING B
 COLOR CREAM
 WHITE
 RAL 9001



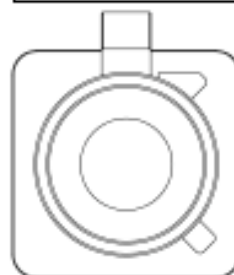
CODING C
 COLOR BLUE
 RAL 5005



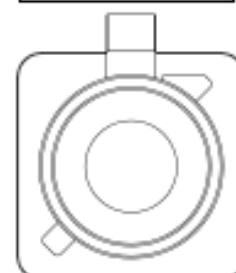
CODING D
 COLOR BORDEAUX
 VIOLET
 RAL 4004



CODING E
 COLOR GREEN
 RAL 4002



CODING F
 COLOR BROWN
 RAL 8011



CODING G
 COLOR GREY
 RAL 7031



CODING H
 COLOR VIOLET
 RAL 4003



CODING I
 COLOR BEIGE
 RAL 1001



CODING K
 COLOR CURRY
 RAL 1027



CODING L
 COLOR WATER BLUE
 RAL 5021

UL CLASSIFICATION
 UL 94V-2

**According to FAKRA specifications*

To obtain other coding for the connector please change the letter by the needed coding letter into the Part Number

Issue : 0943 C

In the effort to improve our products, we reserve the right to make changes judged to be necessary.

